



# GETTING THE MOST OUT OF YOUR LATHE

WOOD TURNING — METAL TURNING — METAL SPINNING



Edited by  
SAM BROWN

A Complete Handbook Describing all Branches of Lathe  
Operation in the Home Workshop with Over Two  
Hundred Photographic Illustrations and Line Drawings.

Copyright 1935

**DELTA MANUFACTURING CO.**

Milwaukee

Wisconsin

Printed in U. S. A.

# MAIN CONTENTS

## BOOK ONE—WOOD TURNING

### CHAPTER ONE—THE LATHE AND ITS EQUIPMENT

The Wood Lathe—Tools—Indexing Mechanism—Installation—Accessories—  
Measuring Tools ..... 4-6

### CHAPTER TWO—SPINDLE TURNING

Centering the Work—Tool Rest Position—Roughing-Off—Squaring Ends—Smoothing a Cylinder—Position of Hands—Cutting Shoulders—Vees and Beads—Long Cuts—Cove Cuts..... 7-12

### CHAPTER THREE—FACEPLATE AND CHUCK TURNING

Mounting the Work—Elementary Operations—Turning a Ring—Turning a Sphere—  
Napkin Rings ..... 13-16

### CHAPTER FOUR—SPECIAL TURNING OPERATIONS

Post Blocking—Oval Turnings—Split Turnings—Turned Boxes—Duplicate Turning—  
Spiral Turnings—Fluting and Reeding ..... 17-22

### CHAPTER FIVE—JIGS AND FIXTURES

Off-Center Work—Turning Dowels—Centering Device—Other Ideas ..... 23-24

### CHAPTER SIX—USING LATHE ATTACHMENTS

The Sanding Drum—Sanding Disk—Other Accessories—The Steady Rest ..... 25-26

### CHAPTER SEVEN—WOOD FINISHING

Wax Finish—Frictional Polish—Oil Finish—Varnish—French Polishing—Shellac Finish ... 27

## BOOK TWO—METAL TURNING

### CHAPTER EIGHT—EQUIPMENT FOR METAL WORK

The Slide Rest—Eight-Speed Lathe—Lathe Chucks—Set-Over Tailstock—Adjustments ..... 28-30

### CHAPTER NINE—OPERATIONS IN METAL TURNING

Centering Spindle Work—Mounting Work Between Centers—Application of Lathe Tools—  
Tool Bit Nomenclature—Angles and Heights—The Theory of Cutting—Common Operations—  
Mandrels—Faceplate Work—Chucking ..... 31-34

### CHAPTER TEN—MISCELLANEOUS METAL OPERATIONS

Knurling—Drilling—Internal Cuts—Bevels—Taper Cuts—Tapping and Reaming—  
Filing and Polishing ..... 35-37

## BOOK THREE—METAL SPINNING

### CHAPTER ELEVEN—SPINNING EQUIPMENT

The Lathe for Spinning—Tools—The Tool Rest—Tailstock Center—Arbors and Faceplates... 38-39

### CHAPTER TWELVE—METHODS OF WORKING

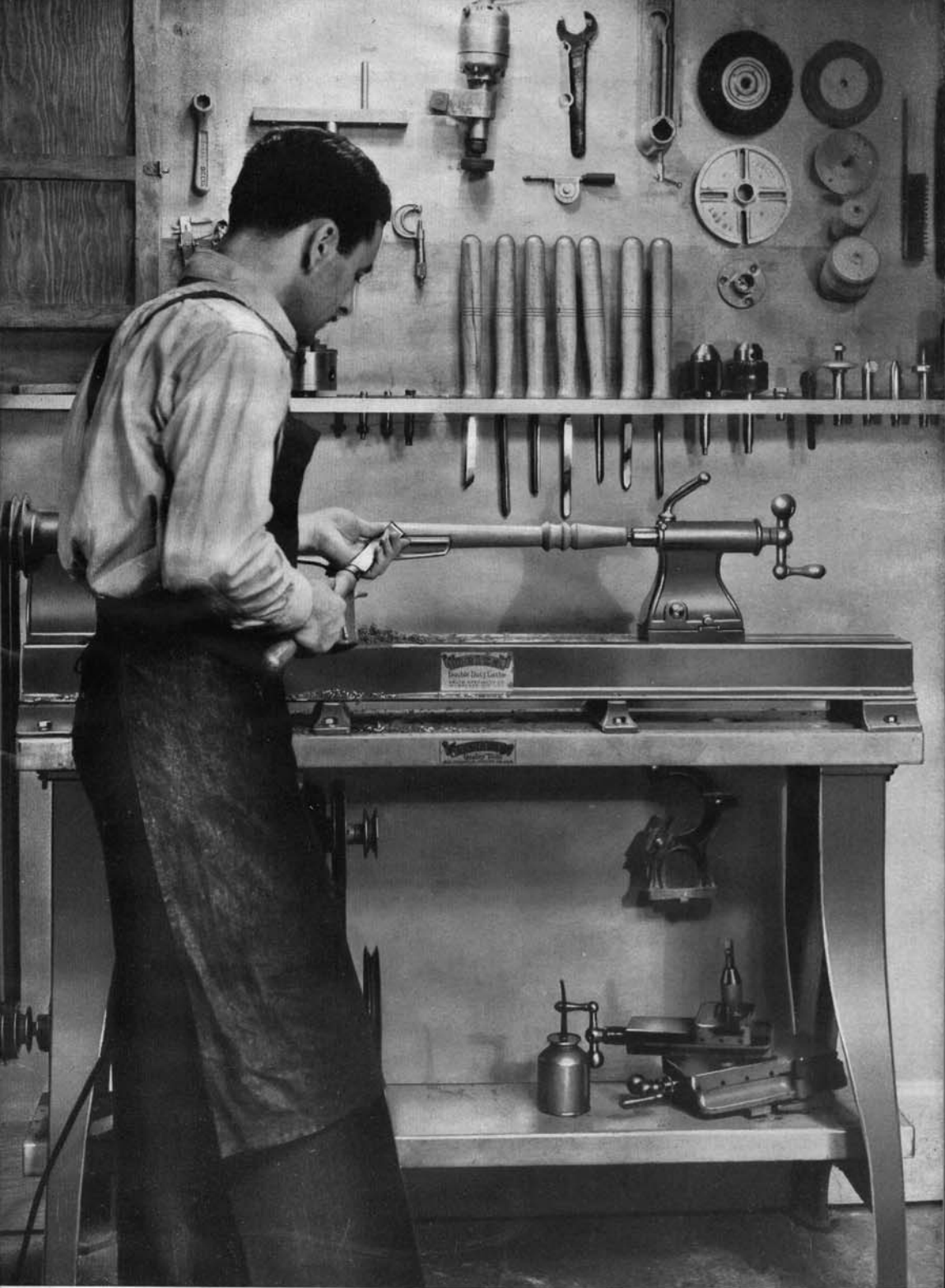
Setting-Up—Centering—Spinning the Metal—Cutting Off—Beads ..... 40-42

### CHAPTER THIRTEEN—SPECIAL SPINNING CHUCKS

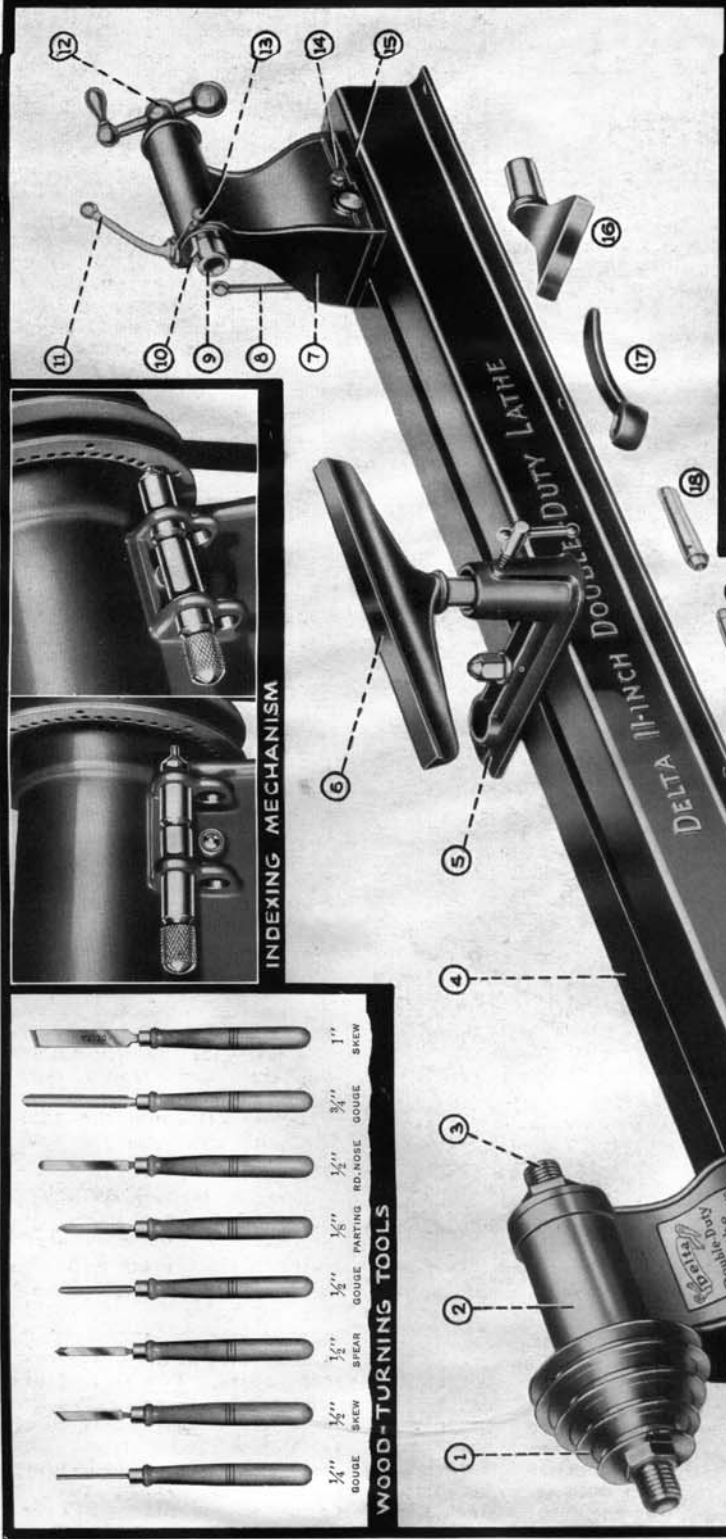
Spinning a Sphere—Sectional Chucks—Metals—Finishing ..... 43-45

## APPENDIX

Common Woods—Shop Data—Tap Drill Sizes—Number-Size Drills—Decimal Equivalents—  
Table of Taper Cuts—Grinding Angles for Wood Turning Tools—Grinding Angles for Metal  
Turning Tool Bits—Lathe Speeds ..... 46-48



*An Important Corner in the Home Shop . . . The Photo Shows the General Working Position of the Operator. Lighting Should Be Overhead. Tools Should be Arranged on a Convenient Panel or Shelves So That Each Piece Is Easily Located as Required*



**PRINCIPAL PARTS OF THE LATHE**

- 1 Four-Speed Cone Pulley
- 2 Headstock Spindle
- 3 Headstock Spindle
- 4 Lathe Bed
- 5 Tool Support Base
- 6 12-In. Tool Support
- 7 Tailstock
- 8 Tailstock Clamp
- 9 Tailstock Spindle
- 10 Quill Pointer
- 11 Tailstock Spindle Clamp
- 12 Tailstock Feed Handle
- 13 Quill Lock Screw
- 14 Set-Over Adjusting Screw
- 15 Tailstock Base
- 16 4 in. Tool Support
- 17 Tool-Support Base Wrench
- 18 Cup Center
- 19 Spur Center
- 20 Arbor Wrench
- 21 Allen Wrench
- 22 3 in. Faceplate



**THE WOOD LATHE**